

**Silent Gliss**

# BEST PROJECTS





# Life is good when things run smoothly

More than 70 years ago, as a little girl, my mother was woken up shortly after falling asleep by the loud screeching of the neighbour's curtain tracks. Consequently, her father, the inventor Alexander Weber, set to work and created the silent curtain track. The ingenious combination of a bendable aluminium track and a plastic glider brought silence into the house – and with its patenting in 1952, the company Silent Gliss was born.

Soon after, son-in-law Konrad Bratschi and partners set up an international group that continues to develop and market the world's most sophisticated curtain track and blind systems.

Today, we are a proud and independent Swiss company with a long tradition, committed to constant innovation, excellent quality and the highest level of service.

Our international structure of Silent Gliss companies and partners in over 75 markets allows us to serve and support our customers worldwide.

For you, we will remain committed to our motto 'Top of the Pyramid'.

Kind regards



Dr. Bernhard Bratschi  
Executive Chairman



# Gstaad Palace

Built in 1913, Gstaad's landmark hotel has been family owned for three generations and combines classic grand hotel glamour with alpine comfort. All stylishly furnished rooms and suites offer the highest luxury and unsurpassable views of the Swiss Alps.

Silent Gliss Metropole with Wave curtains using Colorama Dimout fabric blend seamlessly with the Alpine Chic decor of the penthouse, providing privacy and room-darkening. Numerous other Silent Gliss curtains and roman blinds are used throughout all areas of the hotel.





## PROJECT DETAILS

Owner  
**Andrea Scherz**

Interior Designers  
**Andrea Scherz & Marina Nickels**

Photography  
**Mike Niederhauser**

## SELECTED SYSTEM INFO

**SG 7610 / Colorama Dimout**

Metropole – elegant curtain pole with round, bendable profile

Available in 15 colours

Available with a range of classic and contemporary finials

2-component glider technology for smooth curtain gliding

Exclusive Colorama dimout fabric with colour matched reverse for a uniform appearance inside and out



## PROJECT DETAILS

Customer  
**Dekor Berger**

General contractor  
**Gerstl Bau GmbH & Co KG**

Owner  
**Österreichische Post AG**

Architects  
**Schenker Salvi Weber  
Architekten ZT GmbH / Feld72**

Photography  
**Lukas Schaller**

# Post at Rochus

## SELECTED SYSTEM INFO



### SG 6380 / customer fabric

Rectangular and bendable profile,  
min. bending radius 100mm

2-component glider technology  
for smooth curtain gliding

For medium to heavy duty applications

The impressive concrete façade of the Post building in the lively Rochusmarket make it a prominent feature of Vienna's cityscape. The design artfully integrates the 20<sup>th</sup> century listed post office into the new building.

with oak wood, deep pile carpets and acoustic furniture, complemented by Silent Gliss curtains. Bent SG 6380 curtain tracks elegantly define the glazed meeting and retreat rooms, providing privacy when required.

A spacious entrance hall separates the offices from the shopping centre, conveying a stunning first impression – complete with motorised SG 5600 curtain tracks. Upstairs is an open plan, flexible workspace furnished









## PROJECT DETAILS

Customer  
**Tangram Furnishers**

Owner  
**Cala Group**

Architects  
**Richard Murphy Architects**

Photography  
**ZAC + ZAC**





# The Crescent Apartments

— United Kingdom

The Crescent is a development of innovative and exquisite city residences in the hugely popular city of Edinburgh, Scotland. This 18 acre estate has been tastefully transformed, offering homes with soaring one-and-a-half height windows shaded with Silent Gliss motorised roller blinds and curtain tracks.

collaboration between the contractor and the developer in the early planning stages meant all the apartments were equipped with Silent Gliss motorised roller blinds with Multiscreen 5% fabric for glare and heat management. Decoration comes in the form of Wave curtains using fabrics from The Collection, hung on motorised and manual curtain tracks.

Whilst visually stunning, managing the glare from the tall, south-facing windows was a challenge. Close

## SELECTED SYSTEM INFO



### SG 4960 / Multiscreen 5%

Motorised roller blind system with premium tubular motors for quiet and smooth operation

Smart motors available for home control systems

Double systems use one motor for reduced light gaps

Fixed wall switch, radio remote or app control

Screen fabric in 3 openness factors with superior light control to minimise glare

## PROJECT DETAILS

Building shipyard  
Chantiers de l'Atlantique, Saint-Nazaire,  
France

Owner  
Royal Caribbean Cruises Ltd.

Photography  
Royal Caribbean International

## SELECTED SYSTEM INFO



### SG 5600 / customer fabric

The world's most silent motorised curtain track system

Patented 2-component roller technology for smooth curtain gliding

Equipped with 'Touch and Go' and an integrated manual override operation

Permanent positioning sensor, keeps end positions without power

Fixed wall switch, radio remote or app control



# The Wonder of the Seas





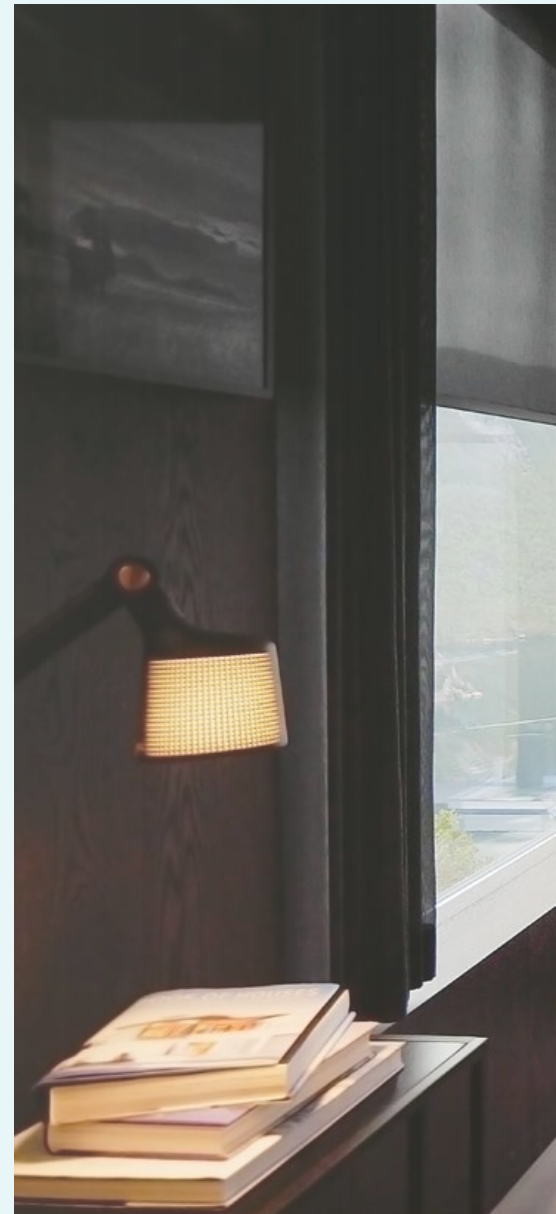
The maiden voyage of the Wonder of the Seas took place in the Caribbean in March 2022. The world's largest cruise ship was built at the Chantiers de l'Atlantique shipyard in Saint-Nazaire, France. It is a remarkable 362 metres long and can accommodate 7,000 passengers on board. There are 25 bars and several restaurants on 18 decks.

All 48 suites of the cruise ship were equipped with Silent Gliss electric curtain track systems. The 105m<sup>2</sup> Ultimate Family Suite accommodates up to nine guests and extends over two floors with its own cabin slide. Electric curtain track systems shade the high-ceilinged living area and provide a view of the large balcony and sea at the touch of a button. Additional curtain track and blind systems are specified in the restaurants and bars.

— Bahamas



# The Bolder Sky Lodges



The Bolder Sky Lodges are throned on a single steel column to minimize the landscape footprint. The twin-level cubes, wrapped in cedar wood, with floor-to-ceiling glazing provide unparalleled views over Norway's Lysefjord.

The Sky Lodges have a 22m<sup>2</sup> living area which includes a kitchen, dining area, two bedrooms and a bathroom. With so many windows, a major consideration was how to protect the interior from high levels of solar radiation. The solution was found in the SG 4960 motorised





roller blind system with Basicscreen 10%. This screen fabric provides the necessary UV protection without obscuring the breathtaking view, whilst simultaneously providing a layer of internal insulation against the cold air flow associated with such large glazed areas. The dining room Wave curtain in Someo fabric adds ambience and decoration.

#### PROJECT DETAILS

Customer  
**Expo Nova**

Owner  
**The Bolder Experience AS**

Architect  
**John Birger Grytdal, Norgeshus**

Photography  
**Anne Bråtveit / [www.bitmap.no](http://www.bitmap.no)**

#### SELECTED SYSTEM INFO



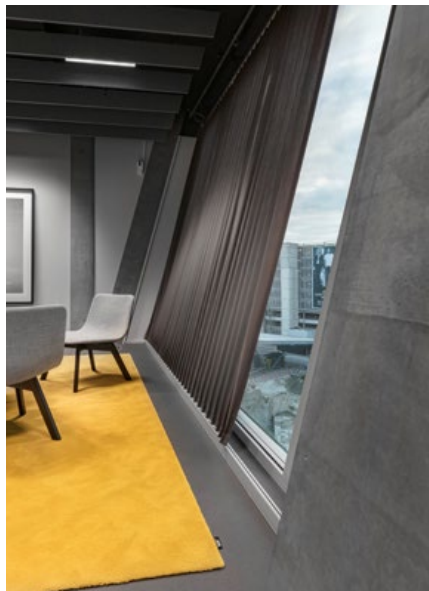
##### SG 4960 / Basicscreen 10%

Motorised roller blinds with premium tubular motors for quiet and smooth operation

Smart motors available for building control systems

Fixed wall switch, radio remote or app control

Basicscreen fabric with superior light control characteristics to minimise glare



## PROJECT DETAILS

General contractor  
**HRS Real Estate AG**

---

Owner  
**Flughafen Zürich AG**

---

Architect  
**Riken Yamamoto & Field Shop**

---

Interior Designer  
**agps architecture, team H12, Ruth Bühler**

---

Photography  
**Mike Niederhauser**





# The Circle

With 180,000m<sup>2</sup> of usable space, The Circle is not only the largest building project in Switzerland, but together with the park behind it, a unique meeting place at Zurich Airport. The airport operator has moved into its headquarters over 5 floors offering 600 employees a modern working environment in a prime location.

This new building boasts an eye-catching 40m high glass façade which slopes up to 19 degrees. Silent Gliss worked closely with

HRS and the architect to develop motorised sloping systems for interior shading. The main challenge was to keep the curtain in tension whilst still allowing it to move. With two parallel electric curtain track systems, Silent Gliss was able to meet the architect's highest technical and aesthetic demands.

— Switzerland

## SELECTED SYSTEM INFO



### SG 5600 / Colorama 1 + 2

Silent Gliss system specifically developed for The Circle: two parallel electric curtain track systems with sloped, horizontally sliding curtains

Patented 2-component roller technology for smooth curtain gliding

Permanent positioning sensor, keeps end positions without power

Full integration into the Building Automation System

Colorama, the exclusive Silent Gliss fabric in Trevira CS yarn. Flame retardant and Cradle to Cradle Certified™ Bronze.

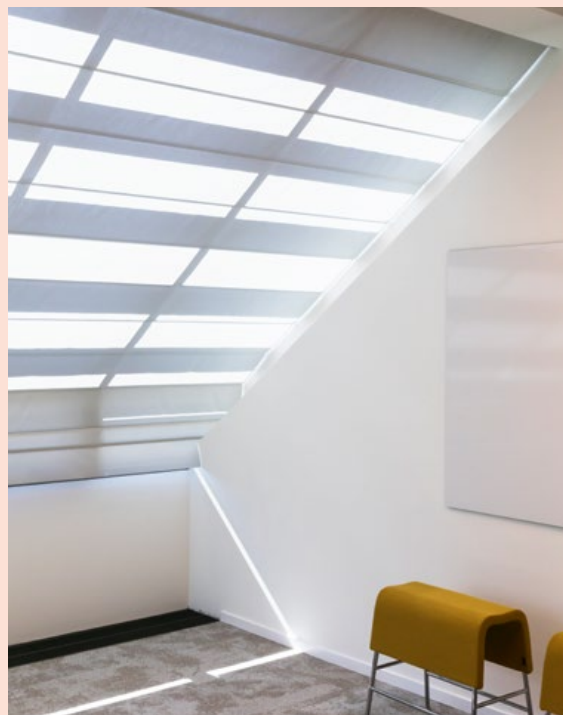


# Miba Forum

The Miba Group is one of the leading strategic partners of the international engine and automotive industry. Tradition and identity on one hand, innovative spirit and future orientation on the other. These basic parameters of the corporate philosophy combine to shape the new headquarters in Laakirchen and are reflected in the spatial implementation of the working environment.

The upper floor is home to the office world of 'new working': flexible arrangements of individual offices alongside finely structured open-

plan offices. The striking beechwood construction is specified with over 60 motorised skylight systems, spanning the entire structure. The aluminium backing of the Aluscreen Futura fabric ensures high solar reflectance values to improve the room climate and offers excellent glare protection for workstations – all operated at the touch of a button.







## PROJECT DETAILS

Owner  
**Miba AG**

Architects  
**Delugan Meissl Associated Architects**

Interior Designer  
**Dipl. Ing. Denise Riesenberg**

Photography  
**Daniel Hawelka**

## SELECTED SYSTEM INFO



### SG 2195 / Aluscreen Futura

Electrically operated skylight shading system to shade wintergardens

Wide range of possible applications: horizontal, sloped, bent and arched

Up to 3 systems can be coupled with a total width of up to 6m and operated with only one motor

Fixed wall switch, radio remote or app control

Premium screen fabric with aluminium backing for increased solar reflection





# OLG Theatre





## PROJECT DETAILS

Customer  
**Brading Fabrication Limited**

Owner  
**Ontario Lottery Gaming Corporation**

Architects  
**Petroff Partnership Architects**

Interior Architects  
**ARK Studio Design**

Photography  
**Javad Ahmadi**

## SELECTED SYSTEM INFO



### SG 4880 / Multiscreen 10%

Large format roller blinds

Quiet, heavy duty system

Patented Silent Gliss Quick Twist permits easy on-site adjustments of the headrail to minimise fabric roll off

Fixed wall switch, radio remote or app control

Screen fabric in 3 openness factors with superior light control to minimise glare

The OLG Theatre at Niagara Falls is a 5000 seat world-class venue with world-class shading. Situated in the Fallsview Casino Entertainment Centre, this state-of-the-art venue will play host to an incredible line up.

The auditorium is equipped with 48 SG 4880 motorised roller blinds over 2 floors. Each roller blind measures an impressive 5 x 8 metres. The challenge was to create the perception

of one single shading system across each floor. To achieve this each blind was fitted to overlap by 10cm, with the fabric assembled with alternate forward and reverse roll. Each floor is fitted with 24 blinds connected to one group controller for simultaneous operation at the touch of a single button.





# Skylobby

## PROJECT DETAILS

Architects  
**KSP Jürgen Engel Architekten**

Interior Designer  
**Merz Innen. Architektur**

Photography  
**Wolfgang Uhlig**

SAP, one of Europe's largest software companies has opened a new branch in Eschborn which offers space for 500 employees. The contemporary architectural concept includes classic and open-plan offices, with a skylobby over two floors which boasts a fantastic view of Frankfurt.

The challenge was to how to shade the high, double-storey windows elegantly whilst providing the required level of privacy and glare protection. The priority was to maintain the external view for occupants without compromising the internal

atmosphere. The obvious choice was the quiet and powerful SG 5600 motorised curtain track with the flexibility of individual curtain control at the touch of a button. Combined with Colorama 2 Wave curtains, the continuous curves of the curtain look particularly stunning on the 7m drop.

## SELECTED SYSTEM INFO



### SG 5600 with Wave / Colorama 2

The world's most silent motorised curtain track system

Patented 2-component roller technology for smooth curtain gliding

Equipped with 'Touch and Go' and an integrated manual override operation

Permanent positioning sensor, keeps end positions without power

Fixed wall switch, radio remote or app control

Colorama, the exclusive Silent Gliss fabric in Trevira CS yarn. Flame retardant and Cradle to Cradle Certified™ Bronze.



# Coombe Park

Set in a tranquil, private-gated estate in south-west London is this award-winning, contemporary private residence. Described as a sculptural masterpiece, this house was the recipient of the RIBA Manser Award, widely regarded as the UK's most prestigious architectural prize for one-off house design.

Sunken into the landscape, this house unfurls into an open plan kitchen, living and dining room

looking out through an expanse of curved-glass walls. With such vast floor-to-ceiling glazing, only the power and scale of Silent Gliss motorised curtain tracks would suffice. Integrated into a home control system, SG 5600 systems with Wave hug the curves of the windows. Additional systems are used to divide up areas to create individual rooms within this stunning open-plan space.







## PROJECT DETAILS

Building contractor  
**Valley Contracts Ltd.**

Architects and Interior Design  
**Eldridge London Architects + Designers**

Photography  
**Nick Gutteridge**

## SELECTED SYSTEM INFO



### SG 5600 with Wave / Colorama 1

The world's most silent motorised curtain track system

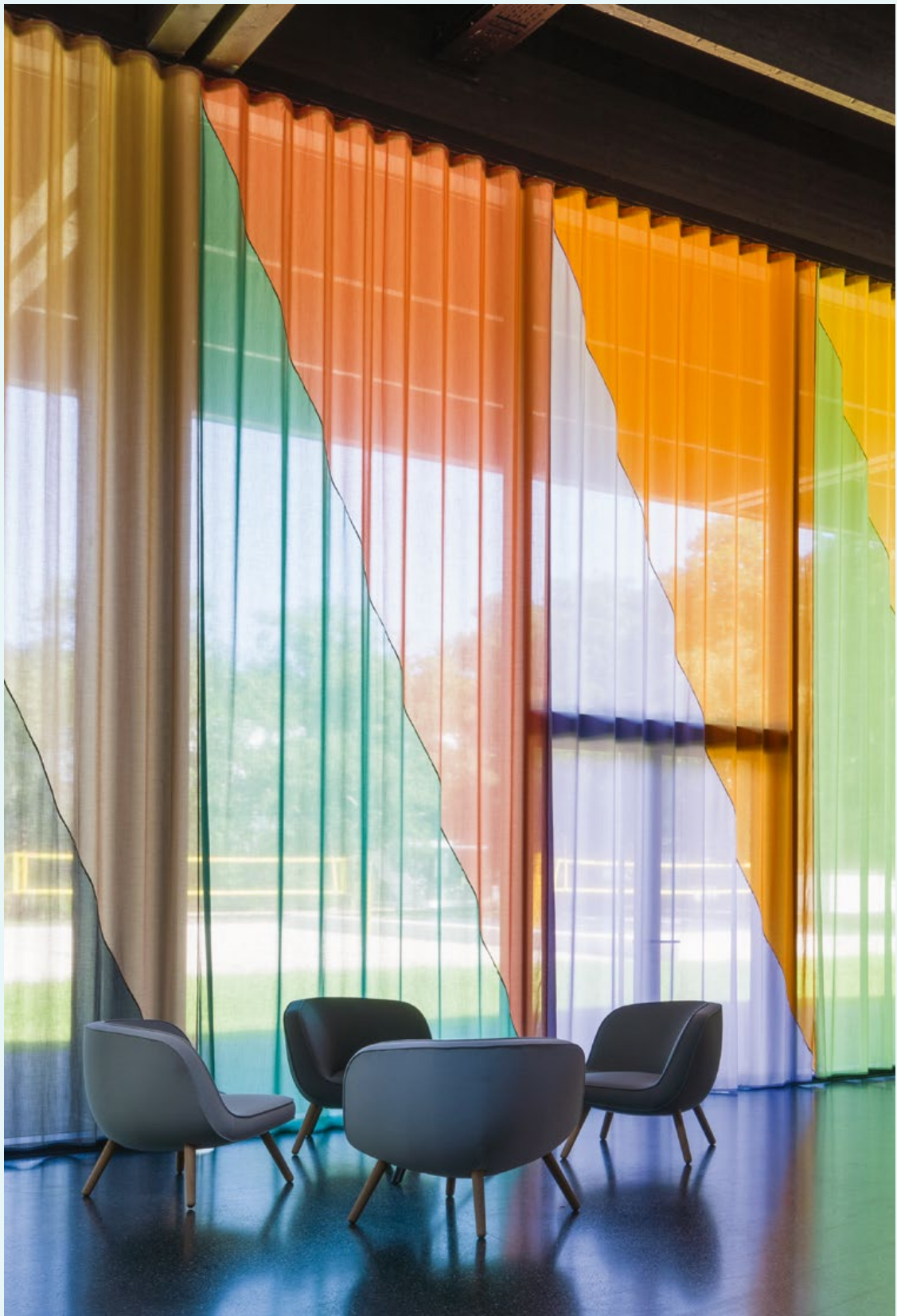
Bent systems, including recess profile for curved applications

Patented 2-component roller technology for smooth curtain gliding

Equipped with 'Touch and Go' and an integrated manual override operation

Full integration into the Building Automation System

Colorama, the exclusive Silent Gliss fabric in Trevira CS yarn. Flame retardant and Cradle to Cradle Certified™ Bronze.





# Kepler Hall

Kepler Hall is the new entrance to the Johannes Kepler university campus in Linz. This multifunctional building was created with an assembly hall, sports hall and lounge, which is also used as an event location. It is a great example of how art and building can be optimally combined.

The competition for the design of the 800m long curtain was won by Gilbert Bretterbauer, who immersed Kepler Hall in a sea of colour. Created

using the stable and flame-retardant Colorama 1 fabric, this stunning feature uses 28 shades of colour sewn in a diagonal arrangement to create a cheerful and lively atmosphere. The jaw-dropping 6m long Wave curtains are hung from a SG 5600 motorised curtain track.

— Austria

## PROJECT DETAILS

General contractor  
**Metallbau Wastler GmbH**

Owner  
**Bundesimmobiliengesellschaft m.b.H.**

Architects  
**Riepl Riepl Architekten**

Artist  
**Gilbert Bretterbauer**

Photography  
**Iris Ranzinger, BIG ART**

## SELECTED SYSTEM INFO



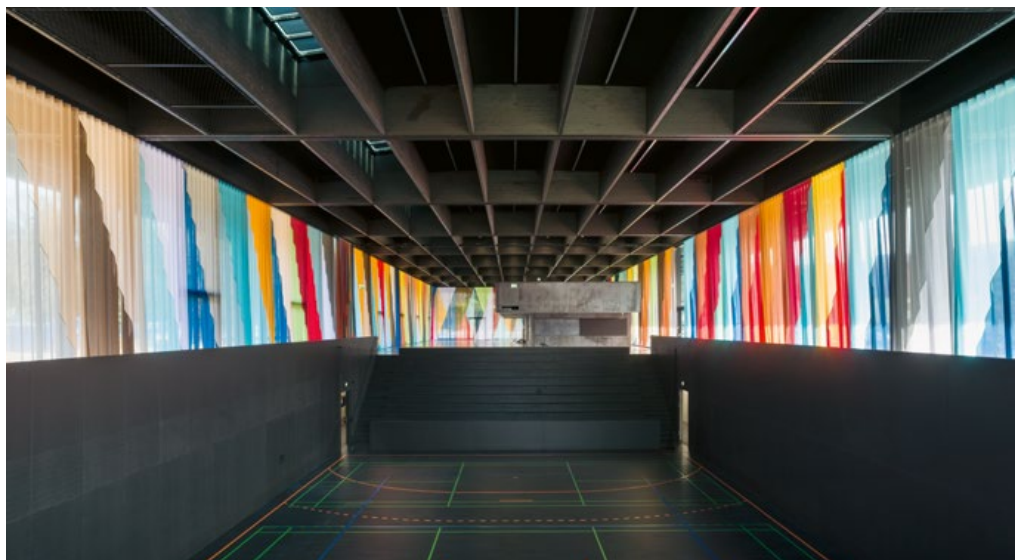
**SG 5600 with Wave / Colorama 1, 28 colours**

The world's most silent motorised curtain track system

Patented 2-component roller technology for smooth curtain gliding

Equipped with 'Touch and Go' and an integrated manual override operation

Fixed wall switch, radio remote or app control





# Sevenoaks School

Sevenoaks School is a leading independent school located in Kent, England. The new Science and Technology Centre is one of the most sophisticated, high specification education buildings in the UK. The interior is designed to encourage curiosity and collaboration in young scientists.

Silent Gliss blinds were layered in the laboratories using roller blinds SG 4910 with Aluscreen Futura fabric to provide glare protection in

daylight, and dim-out system SG 4740 for room darkening. To blend harmoniously with the surroundings, the profiles were colour matched to the window frames. The social and study areas are fitted with hand operated curtain tracks SG 6840 with Wave for a softer room ambience. The end result is an aesthetically stunning, award-winning education facility which has achieved a BREEAM Excellent rating.





## PROJECT DETAILS

Customer  
**Waverley Contract and Supply Ltd.**

Contractor  
**Gilbert-Ash Construction Ltd**

Owner  
**Sevenoaks School**

Architects  
**Tim Ronalds Architects**

Photography  
**Waverley Contract and Supply Ltd.**

## SELECTED SYSTEM INFO



### SG 4740 / Puma

Large format dim-out blind system

Optimal fabric tensioning through ZIP technology from Silent Gliss

The stainless steel ball chain ensures smooth and even rolling up and down

Robust dimout fabric with reliable hanging characteristics









## PROJECT DETAILS

Customer  
**Interieurteam GmbH**

Owner  
**Waldkliniken Eisenberg GmbH**

Architects  
**Matteo Thun & Partners**

Interior Designer  
**HDR GmbH**

Photography  
**H.G. Esch**

# Waldkliniken Eisenberg

— Germany

Patients from the world over are treated in Europe's largest university orthopaedics centre. The circular building blends harmoniously with the forest landscape of the Eisenberg region and promotes 'healing architecture'. Introduced by Matteo Thun, healing architecture is the concept whereby patients have a view of the greenery outside to promote the healing process.

Sustainable wood, warm colours and modern design dominate the 128 patient rooms. The multiple occupancy rooms are arranged with beds, the bathroom and winter garden staggered and fitted with cur-

tains to provide privacy and retreat when required. Over 2,500 metres of curtain track SG 6010 are installed, with multiple curved profiles in each room, all following the radius of the façade. Suspended and curved room divider SG 6100 is specified in the three restaurants.

## SELECTED SYSTEM INFO

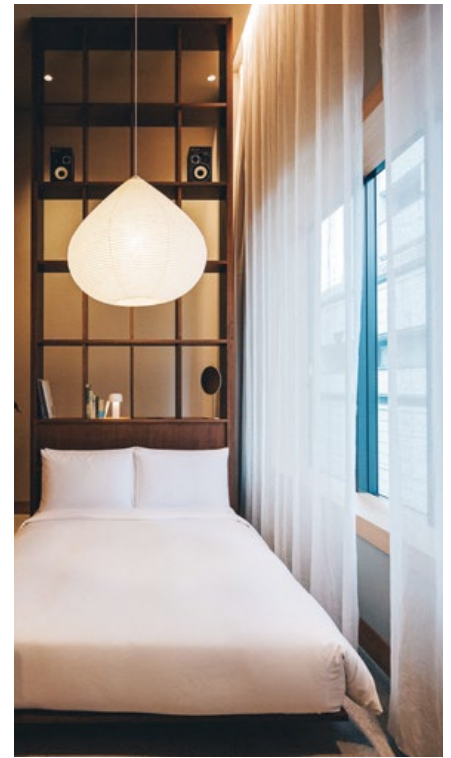
### SG 6010 / customer fabric

Elegant, bendable profile for light to medium-weight curtains

2-component glider technology for smooth curtain gliding

Easy fitting with concealed clamp





# Hotel K5

## PROJECT DETAILS

Contractor  
**Ishizue Column Co., Ltd**

Architect  
**Cleasson Koivisto Rune Architects**

Photography  
**Yikin Hyo**

## SELECTED SYSTEM INFO



### SG 6103 / customer fabric

An example of the versatility of Silent Gliss systems as design or decorative elements

Flexible room divider system

Traditional round profile for light to heavy curtains

Bendable, min. radius 250mm

K5 Tokyo is housed in a converted 1920s bank building and presents 20 rooms on four-levels. More than a hotel, K5 emerges full force as a micro-complex of creative eateries, bars and gathering spots, where Swedish-minimalism-meets-Japanese-heritage design.

The guestrooms are characterised by the inclusion of a central, translucent 4.5m fabric 'cylinder' rising to the high ceiling. The circular room divider system SG 6103 has a diameter

of 3.5m which envelops a freestanding bed with an integrated shelf and desk. The transparent fabric, partially dyed in indigo, is illuminated by a custom-made paper lamp. In all guestrooms, transparent curtains on recessed SG 6243 profiles create a light and bright room ambience with additional dimout curtains for room darkening.







# Linden- house

The imposing 'Lindenhouse' in Berlin dates back to the 1910s. Following a modern renovation, the non-profit NGO Berghof Foundation took up residence on the top two floors.

The main focus was on shading around the computer workstations.

The systems needed to offer a high level of glare protection and contribute to the room acoustics, whilst maintaining an external view. The solution was found in the roller blinds SG 4910, SG 4930 and SG 4840 with Versascreen 5% to manage the solar gain from the south-facing windows.

The track bending expertise of Silent Gliss is showcased in The Octagon meeting room. A precision bent, smooth-gliding and quiet SG 6243 hand operated curtain track with classic curtains define the collaborative space.



## PROJECT DETAILS

Customer  
**Modus Möbel GmbH**

Owner  
**Berghof Foundation**

Architects  
**Kraus Fischnaller Architekten**

Photography  
**Malte Heinze / Oliver Mark**

## SELECTED SYSTEM INFO



**SG 4910 / Versascreen 5%**

Chain-operated roller blind system for  
light to medium-heavy applications

Spring assisted, effortless operation

Click-in brackets allow an easy and fast  
installation

Screen fabric with superior light control  
to minimise glare offered in 4 openness  
factors to suit all building orientations



## PROJECT DETAILS

Customer  
**Sunpro Mèxico**

Owner  
**Naguib Sawiris**

Architects  
**AW<sup>2</sup> Architects**

Interior Designer  
**Stephanie Ledoux**

Photography  
**Magda Biernat**



# Silversands Resort

Located on the beautiful, unspoilt island of Grenada in the Caribbean, is the luxury Silversands resort. Designed to disappear into the landscape, the 43 guestrooms and suites are set around a 100m pool which stretches down from the lobby to the ocean.

The rooms and suites are equipped with a combination of motorised roller blinds with screen fabric for glare control and blackout for room darkening. Electric curtain tracks SG 5600 are used throughout the rooms, not just at the windows – they are curved and fitted to a ceiling

recess around the beds for additional privacy. Even the outdoor showers received the Silent Gliss treatment using SG 8110 venetian blinds.



## SELECTED SYSTEM INFO



### SG 5600 / customer fabric

The world's most silent motorised curtain track system

Bent systems, including recess profile for curved applications

Patented 2-component roller technology for smooth curtain gliding

Equipped with 'Touch and Go' and an integrated manual override operation

Permanent positioning sensor, keeps end positions without power







# Rehab clinic Bellikon





## PROJECT DETAILS

Customer  
**Hans Hassler AG**

General Contractor  
**Gross Generalunternehmung AG**

Owner  
**SUYA**

Architects  
**Burckhardt + Partner AG**

Photography  
**René Rötheli**

## SELECTED SYSTEM INFO



### SG 2900 / Colorama 2

Mono crank operation for optimum privacy and glare protection

Louvre widths 89mm and 127mm

Simple open and closing with the ability to adjust the louvre position

Suitable for sloped applications

Colorama, the exclusive Silent Gliss fabric in Trevira CS yarn. Flame retardant and Cradle to Cradle Certified™ Bronze.

The Bellikon rehabilitation clinic, which had been open since 1974, benefits from a new three-storey front extension to accommodate an expanding range of medical services. An important component of the therapy is sport and exercise, and the additional space includes a spacious sports hall and water world with a swimming pool. Therapy rooms for brain injury patients were also created.

Due to its central location, the new foyer forms the hub of the entire complex with the generously glazed structure extending out across the footprint of the building. Fitted with over 200 Silent Gliss vertical blind systems with a detachable crank, the louvres can be finely adjusted to provide precise levels of light and privacy.



## PROJECT DETAILS

Customer  
**Teo Jakob**

---

Owner  
**Ernst Tanner**

---

Architects  
**KE Architekten**

---

Interior Architects  
**COCC. and coherent AG**

---

Photography  
**undknup**



# Villa Windegg



The Villa Windegg, built in 1870 in the centre of Zurich, was carefully dismantled stone by stone in 1910 and rebuilt in Seefeld on Lake Zurich. Moving the building was a masterstroke for the time. After a core renovation, the villa now meets current building standards and houses a clinic, offices and residences.

Around 100 SG 4960 motorised roller blinds are installed in the listed villa. The window frames were adapted to minimise the side

light gaps and to conceal the bottom bars when the blinds are raised. Over 70 curtain track systems are installed behind bespoke fascias which blend into the stucco ceiling. Sheer curtains gently diffuse daylight with heavier curtains for privacy.

— Switzerland

## SELECTED SYSTEM INFO



### SG 4960 / Multiscreen 1%

Motorised roller blinds with premium tubular motors for quiet and smooth operation

Smart motors available for building control systems

Fixed wall switch, radio remote or app control

Screen fabric in 3 openness factors with superior light control to minimise glare



# The Cloud Workspace





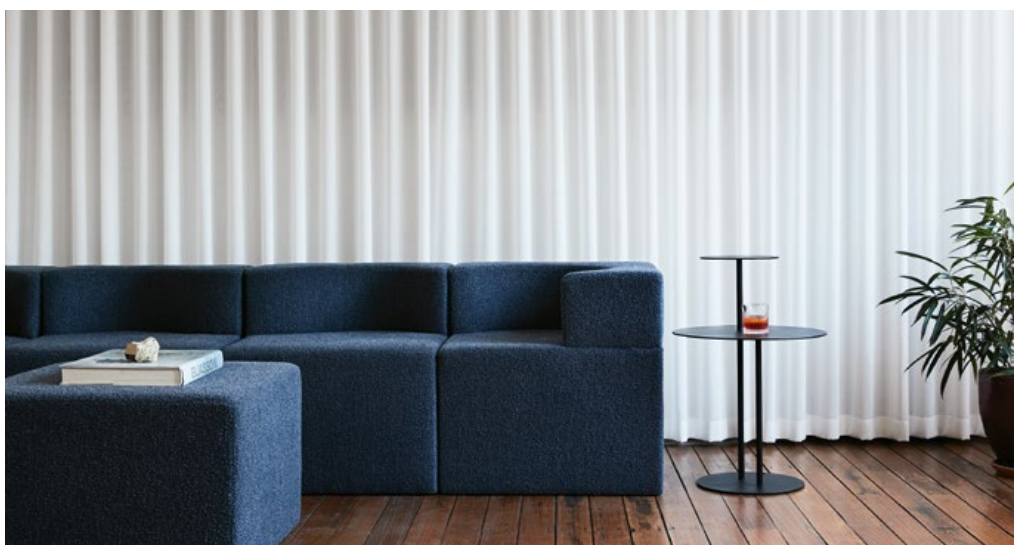


Award-winning Australian architects Foolscape Studio pride themselves on designing spaces that forge connections between people and the environments they create. Therefore, it was important that their own studio was an agile space to promote collaboration between their team and clients.

Using SG 6100 room divider with Wave curtains they created a grown-up professionals' playground, with

zones to accommodate a materials library, strategy studio, workshop, along with a 'front-of-house' kitchen and bar. Whilst facilitating the regular daily activities of the practice, the Silent Gliss curtain tracks transform into moveable partitions that can be quickly and easily retracted to create larger, open spaces for diverse functions and events.

— Australia



## PROJECT DETAILS

Customer  
**Shade Collective**

Architect  
**Foolscape Studio**

Photography  
**Willem-Dirk du Toit**

## SELECTED SYSTEM INFO



**SG 6100 with Wave / customer fabric**

Robust and flexible room divider system

Perfectly suited as a design element for light to heavy curtains

2-component glider technology for smooth curtain gliding

Wave curtain heading offers smooth undulating curves

# Summa Aldapeta School

For more than 125 years, the Marianist School has been associated with the city of San Sebastián. The 18,000 m<sup>2</sup> new building is just as forward-looking as the school's teaching methods. The ultra-modern, functional, and sustainable building is flooded with light making effective interior shading essential.

SG 5100 motorised curtain systems are installed in all classrooms for control at the touch of button. The transparent Colorama 1 fabric

Wave curtains create a harmonious appearance both inside and out. SG 5600 motorised curtain tracks follow the curved glass façade of the auditorium with a further 70 motorised Silent Gliss roller blinds installed in other areas including the staff restaurant.







— Spain



## PROJECT DETAILS

General contractor  
**Construcciones Moyua**

Owner  
**Compañía de María (Marianists)**

Architects  
**IDOM**

Photography  
**Pablo Axpe**

## SELECTED SYSTEM INFO



### SG 5100 with Wave / Colorama 1

Electric curtain system with silent and smooth operation

Bendable profile, min. bending radius 300mm

Easy operation through 'Touch and Go' and an integrated manual override

Fixed wall switch or radio remote control

Colorama, the exclusive Silent Gliss fabric in Trevira CS yarn. Flame retardant and Cradle to Cradle Certified™ Bronze.

## *The Architects of Silence*

*Silent Gliss is the leading global supplier of premium interior window treatments. Since 1952 we have been tirelessly committed to the development of the world's smoothest, quietest systems using state of the art technology.*

*Driven by customer needs, Silent Gliss offers functional and durable products. Expert technical advice coupled with installation and support services complete the offer.*

*Silent Gliss stands for innovative, sustainable, tailor made solutions, exceptional design and first-class quality.*

